

Plans Catalogue



Plans Catalogue

CONTENTS

03 1 Bedroom, 1 Bathroom Plans

20 3 Bedroom, 2 Bathroom Plans

05 2 Bedroom, 1 Bathroom Plans

30 4 Bedroom, 1 Bathroom Plans

13 3 Bedroom, 1 Bathroom Plans

33 4 Bedroom, 2 Bathroom Plans

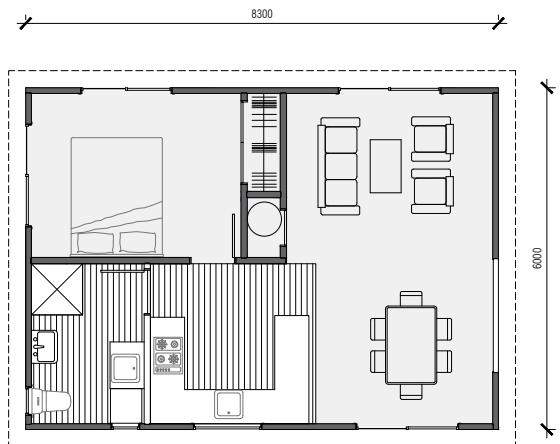




1 Bedroom, 1 Bathroom



 **1 bedroom**
  **1 bathroom**
  **50m² floor plan**
  **8.3m x 6.0m**



A spacious self contained home ideal for a granny flat or holiday home. Not a tiny home but definitely petite.

Featuring 1 bedroom and a generous bathroom with room for a washing machine.

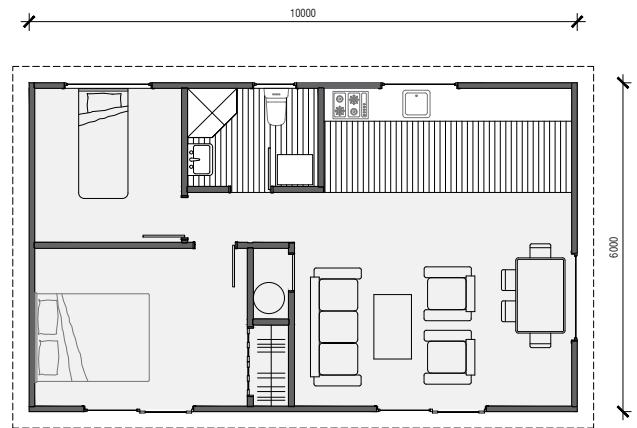




2 Bedroom, 1 Bathroom



 **2 bedroom**
 **1 bathroom**
 **60m² floor plan**
 **10.0m x 6.0m**



Compact, affordable and specifically designed to feel spacious inside. This home is ideal as a secondary dwelling in most councils throughout New Zealand.

Featuring 2 bedrooms, a bathroom, toilet and laundry combination.





2 bedroom



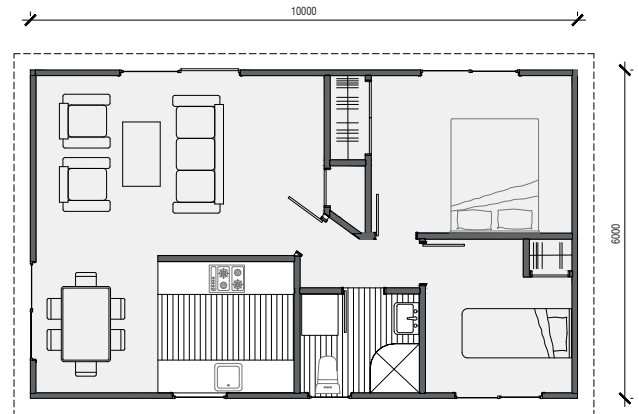
1 bathroom



60m² floor plan



10.0m x 6.0m



A lovely compact home very suitable as a first home or beach retreat. Added bonus of plenty of room for guests to stay.

Featuring 2 bedrooms and a bathroom with space for a washing machine.





2 bedroom



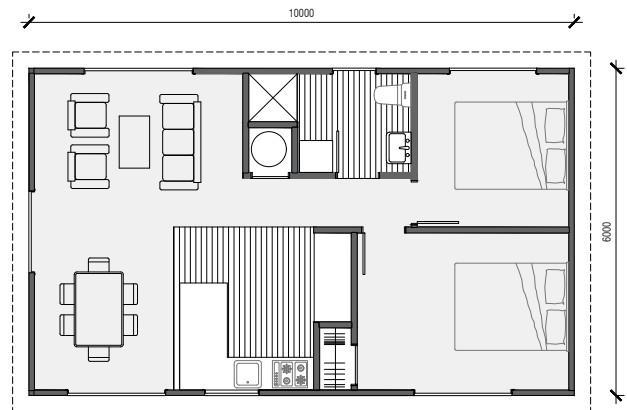
1 bathroom



60m² floor plan



10.0m x 6.0m



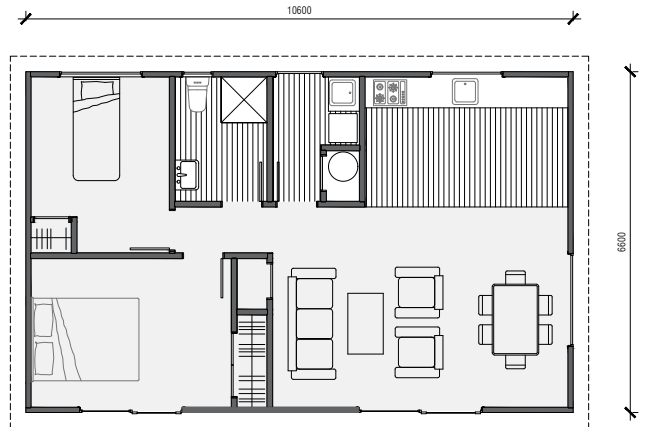
Designed to feel bigger than it is. This compact and affordable home has everything you need.

Featuring 2 bedrooms and an open plan kitchen, living, dining area.





 **2 bedroom**
  **1 bathroom**
  **70m² floor plan**
  **10.6m x 6.6m**



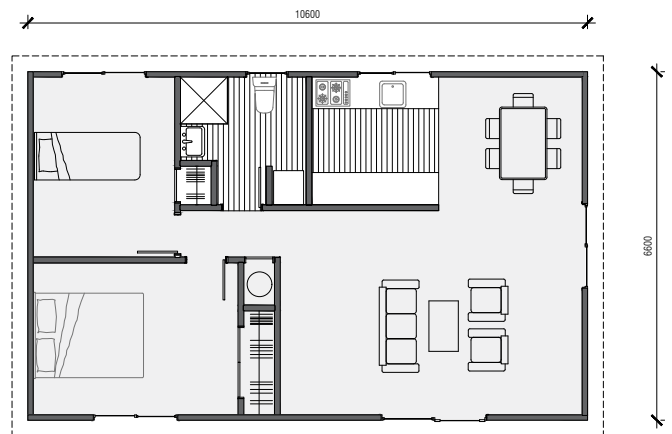
This beautiful home boasts a modern look and a spacious layout. Ideal as a more modestly sized home for those wishing to downsize, or a beach bach.

Featuring 2 bedrooms and a separate laundry area.





 **2 bedroom**
  **1 bathroom**
  **70m² floor plan**
  **10.6m x 6.6m**



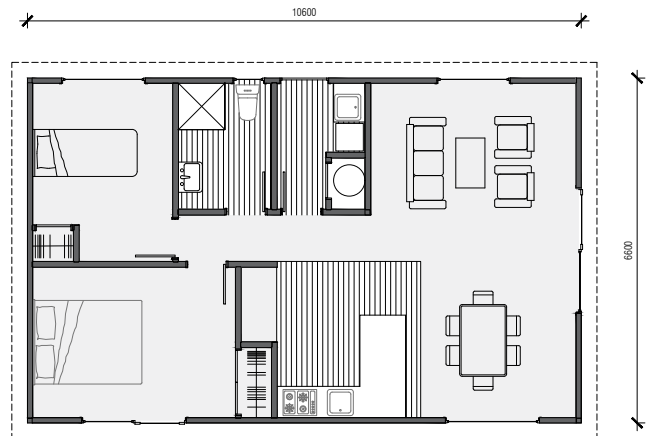
**This mid sized home will amaze you at how large it feels.
This home is perfect for a smaller site or rental.**

Featuring 2 bedrooms and a galley style kitchen with a generous living , dining area.





 **2 bedroom**
  **1 bathroom**
  **70m² floor plan**
  **10.6m x 6.6m**



A well sized home, perfect for smaller sites as a rental or a secondary dwelling.

Featuring 2 bedrooms and a separate laundry area with an exterior door.





2 bedroom



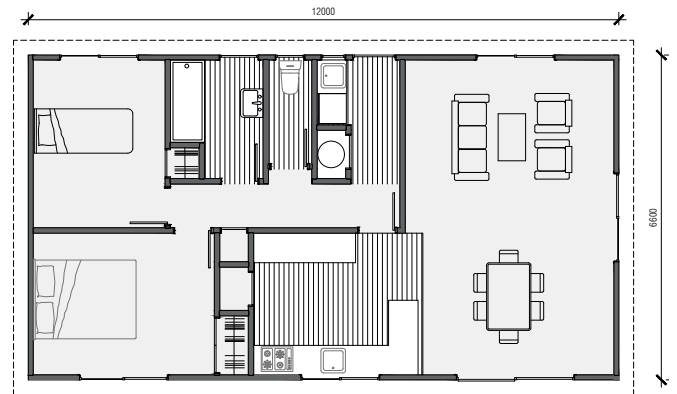
1 bathroom



80m² floor plan



12.0m x 6.6m



Roomy 2 bedroom home with loads of space for friends and family.

Featuring 2 bedrooms and a galley style kitchen with large pantry.





2 bedroom



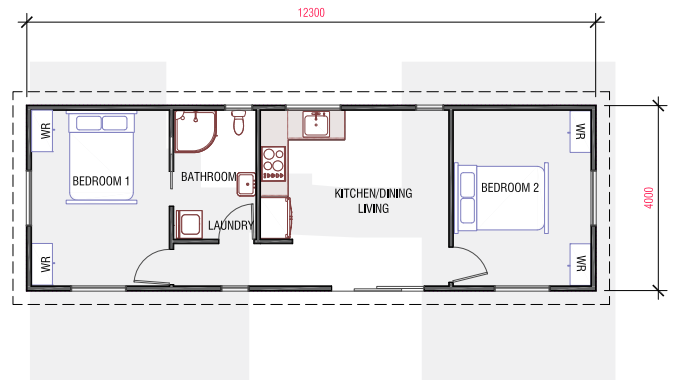
1 bathroom



50m² floor plan



12.3m x 4m



Contemporary look, 2 bedroom home specifically designed for sections with tight spaces.

Featuring 2 bedrooms, 1 bathroom, with access from the master bedroom and open plan living

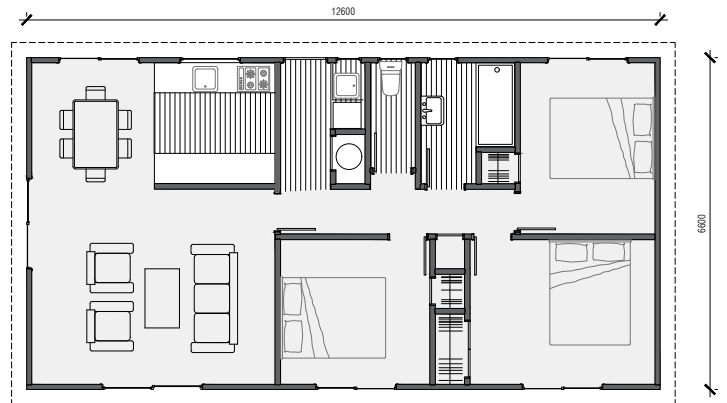




3 Bedroom, 1 Bathroom



 **3 bedroom**
  **1 bathroom**
  **84m² floor plan**
  **12.0m x 6.6m**



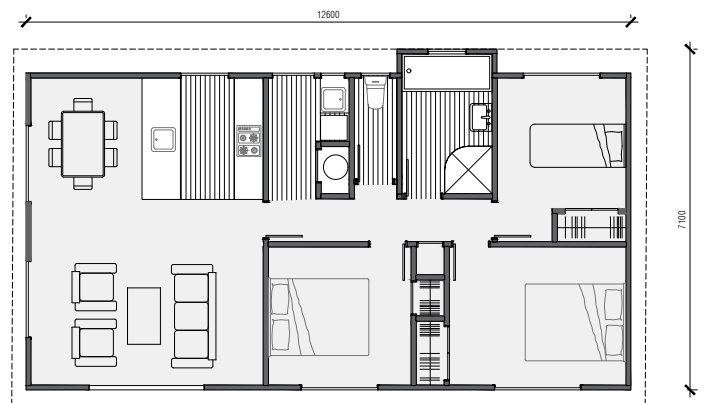
Ideal for a first time home, rental or a holiday getaway. Modest size 3 bedroom home specific for smaller sites.

Featuring 3 bedrooms and a good sized bathroom with separate toilet.





 **3 bedroom**
  **1 bathroom**
  **84m² floor plan**
  **12.6m x 6.6m**



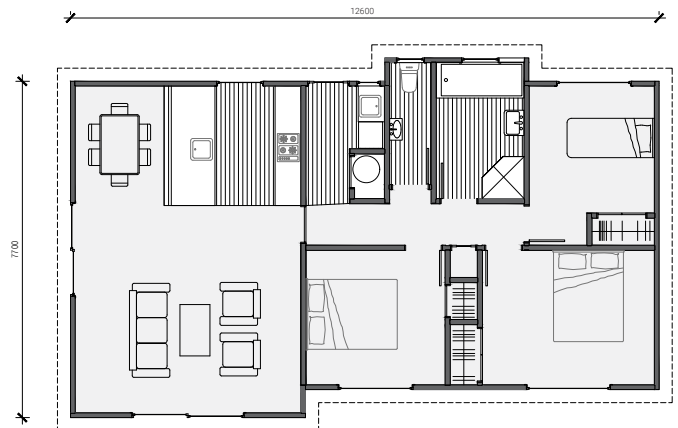
Perfect for customising. Choose a hip or gable roof. Add decks and pergolas to show your individual style.

Featuring 3 bedrooms and an awesome kitchen, dining, living space.





 **3 bedroom**
  **1 bathroom**
  **87m² floor plan**
  **12.6m x 7.7m**



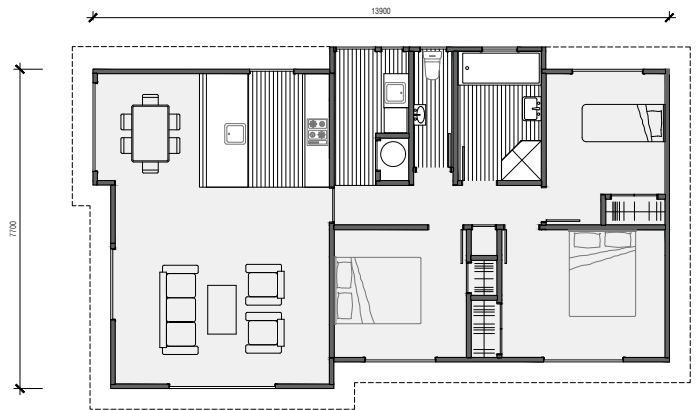
This comfortable, modern home uses space very cleverly. It is ideally suited to use as a first home, rental or bach.

Featuring 3 bedrooms as well as separate toilet and laundry areas. This home also features a lovely breakfast bar style kitchen.





 **3 bedroom**
  **1 bathroom**
  **89m² floor plan**
  **13.0m x 7.7m**



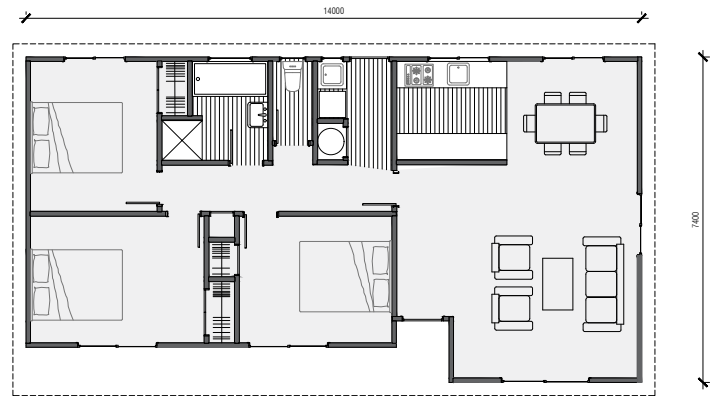
This beautifully designed home shows off a lovely double pitch roof and is ideal for the growing family.

Featuring 3 bedrooms as well as separate toilet and laundry areas. This home also features a lovely breakfast bar style kitchen.





 **3 bedroom**
 **1 bathroom**
 **95m² floor plan**
 **13.9m x 7.9m**



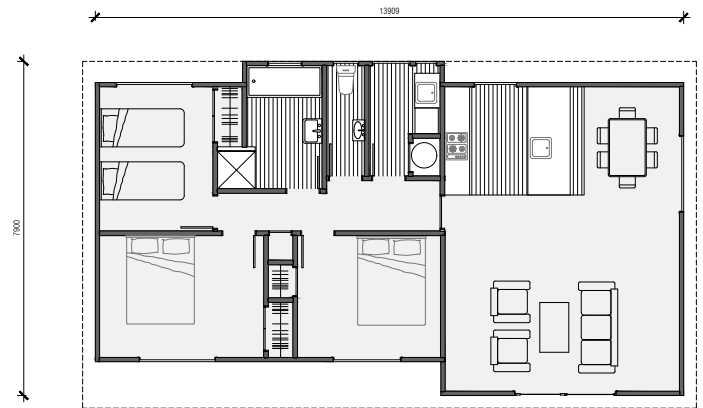
Ideal as a first home with room for growing families this home has plenty of options for adding character.

Featuring 3 bedrooms, separate laundry and a unique exterior design.





 **3 bedroom**
  **1 bathroom**
  **96m² floor plan**
  **13.9m x 7.9m**



Roomy 3 bedroom home with sleek modern styling has lots of space for the growing family.

Featuring 3 bedrooms, 1 bathroom and a breakfast bar style kitchen.

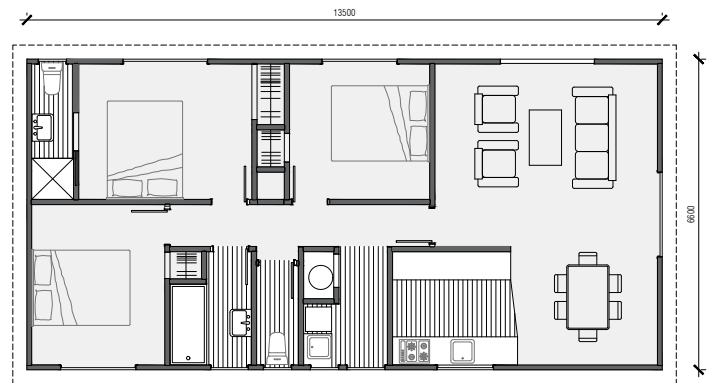




3 Bedroom, 2 Bathroom



 **3 bedroom**
 **2 bathroom**
 **90m² floor plan**
 **13.5m x 6.6m**



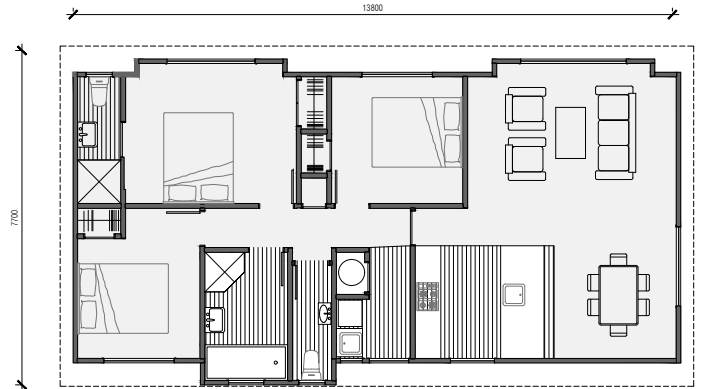
**An affordable, low maintenance home built for modern living.
Everything you need and then some.**

Featuring 3 bedrooms with an ensuite off the master bedroom.





 **3 bedroom**  **2 bathroom**  **93m² floor plan**  **13.8m x 7.7m**



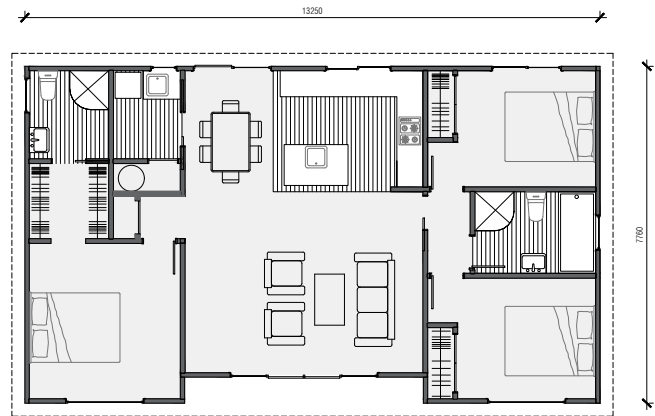
A stunning, modern, monopitch roof, 3 bedroom family home perfect for your piece of land.

Featuring 3 bedrooms, an ensuite off the master bedroom and a very spacious open plan living, dining, kitchen area.





 **3 bedroom**
 **2 bathroom**
 **98m² floor plan**
 **13.2m x 7.7m**



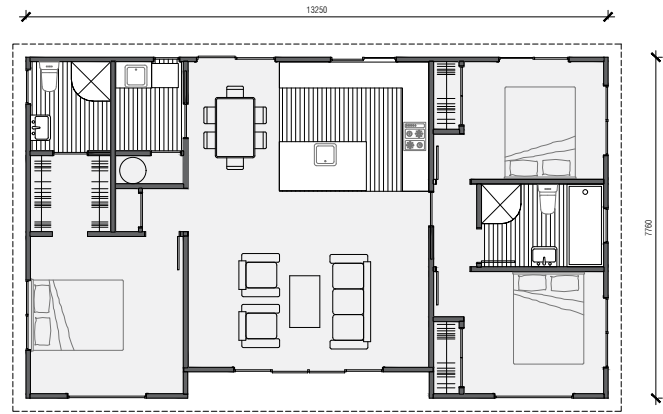
This fabulous design makes a great family home or superb bach.

Featuring 3 bedrooms, a massive central living area and a walk in wardrobe through to an ensuite.





 **3 bedroom**
 **2 bathroom**
 **100m² floor plan**
 **13.2m x 7.7m**



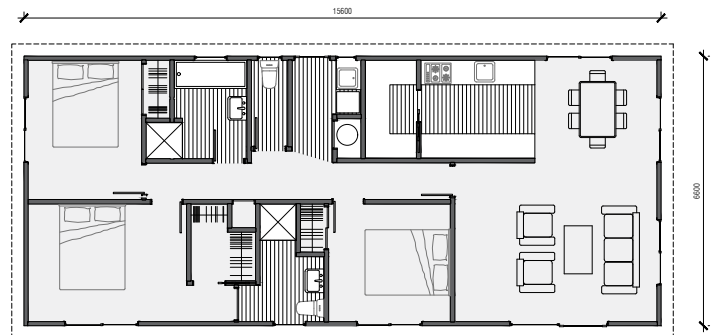
Beautiful contemporary, mono pitch roof home with an amazing central living area.

Featuring 3 bedrooms, walk in wardrobe and ensuite off the master bedroom.





 **3 bedroom**
  **2 bathroom**
  **103m² floor plan**
  **15.6m x 6.6m**



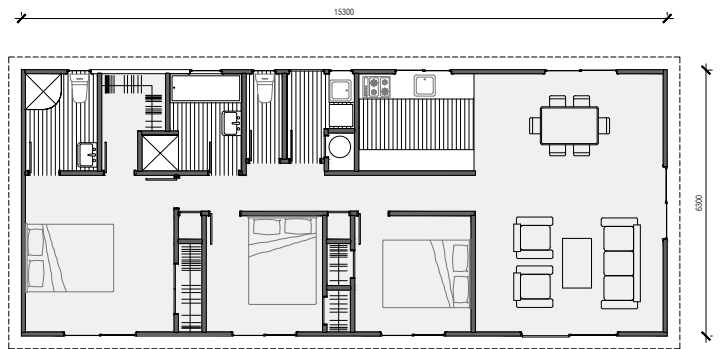
Clean design lines and separate bathrooms. This home is a solid and practical large home for big families.

Featuring 3 bedrooms, a walk in wardrobe, an ensuite and an awesome walk in pantry in the kitchen.





 **3 bedroom**
  **2 bathroom**
  **105m² floor plan**
  **16.0m x 6.6m**



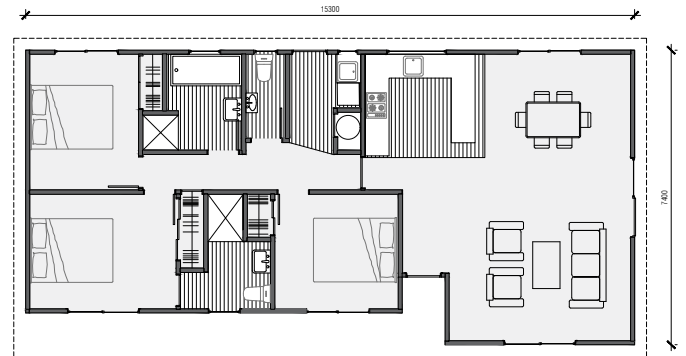
A larger home with more generous proportions. Excellent for large families.

Featuring 3 bedrooms, galley kitchen a walk in wardrobe and a generous ensuite.





 **3 bedroom**
 **2 bathroom**
 **106m² floor plan**
 **15.3m x 7.4m**



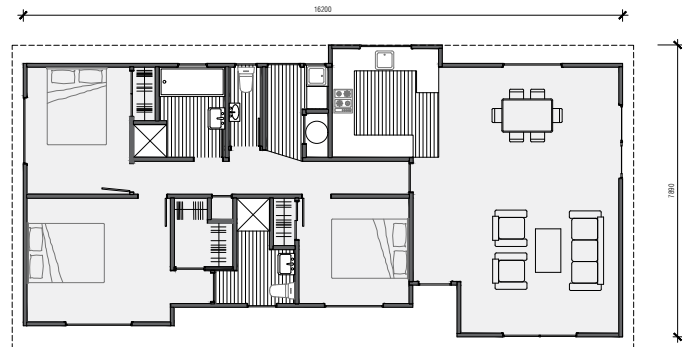
A larger home with more generous proportions and great exterior lines. Excellent for large families.

Featuring 3 bedrooms, a large master bedroom with ensuite and a large lounge, dining area.





 **3 bedroom**
  **2 bathroom**
  **110m² floor plan**
  **16.2m x 7.9m**



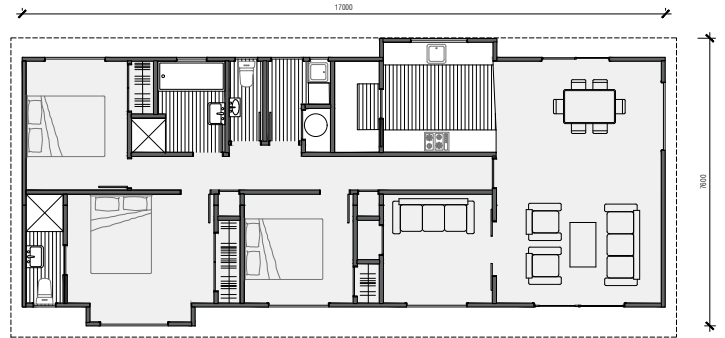
Large footprint, contemporary, mono pitch roof home with excellent open plan kitchen/dining/living area.

Featuring 3 bedrooms, walk in wardrobe and ensuite off the master bedroom.





 **3 bedroom**
 **2 bathroom**
 **115m² floor plan**
 **17.0m x 7.6m**



Gorgeous 3 bedroom home with a media room that could be a 4th Bedroom.

Featuring 3 bedrooms, media room, walk in wardrobe and ensuite off the master bedroom.

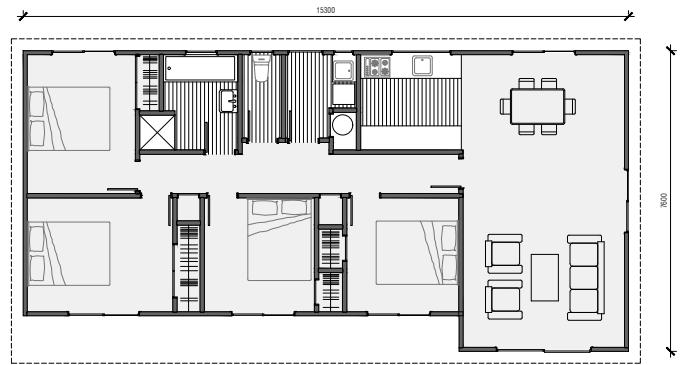




4 Bedroom, 1 Bathroom



 **4 bedroom**
 **1 bathroom**
 **105m² floor plan**
 **15.3m x 7.6m**



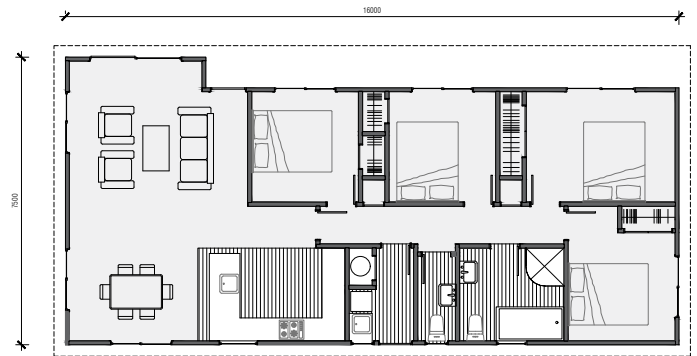
Large footprint home designed for a large family or those who may need space and a home office.

Featuring 4 bedrooms, a galley kitchen and a spacious living/ dining area.





 **4 bedroom**  **1 bathroom**  **111m² floor plan**  **16.0m x 7.5m**



The largest of the traditional series. Space for everyone with generously proportioned bathroom, bedrooms and Kitchen, lounge, dining area.

Featuring 4 big bedrooms and a large bathroom as well as substantial open plan Kitchen, dining, lounge area.

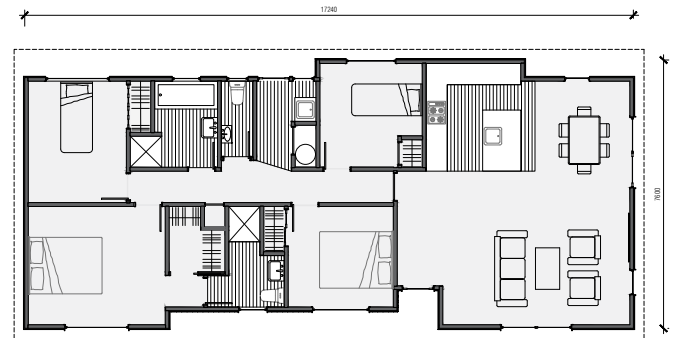


The background is a dark blue color with a repeating pattern of white line-art icons. Each icon depicts a bed with a headboard and a bathtub with a faucet. The icons are arranged in a grid-like fashion, slightly offset from each other.

4 Bedroom, 2 Bathroom



 **4 bedroom**
 **2 bathroom**
 **120m² floor plan**
 **17.4m x 7.6m**



Massive mono pitch home with room for a large family.

Featuring 4 generous size bedrooms, walk in wardrobe and ensuite off the master bedroom.





