



 **3 bedroom**  **2 bathroom**  **106m² floor plan**  **15.3m x 7.4m**



A larger home with more generous proportions and great exterior lines. Excellent for large families.

Featuring 3 bedrooms, a large master bedroom with ensuite and a large lounge, dining area.

**CONTACT US NOW TO
START YOUR PROJECT**

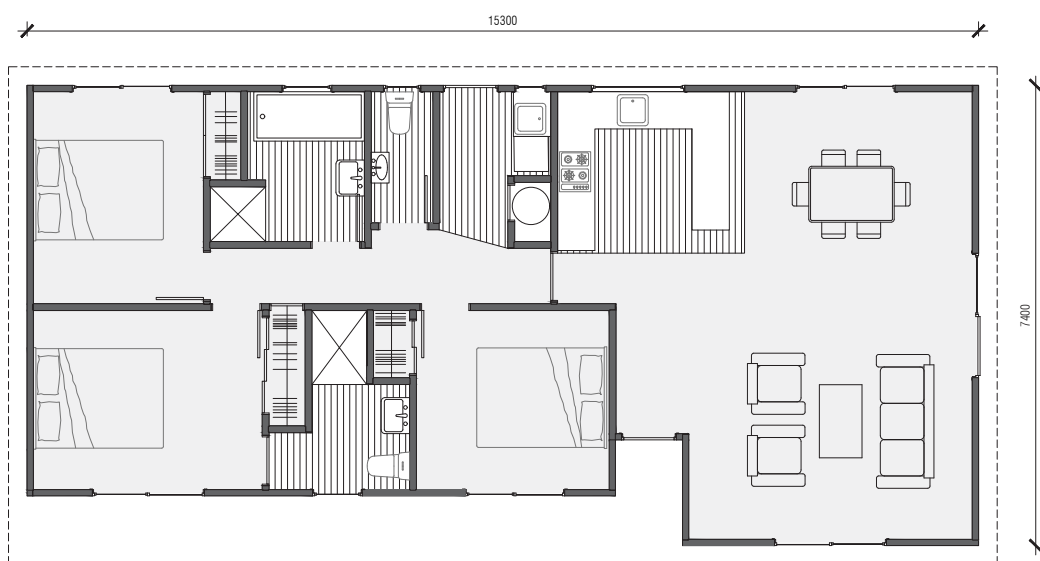
0800 EZYLINE (399 546)

info@ezylinehomes.co.nz

(07) 572 0230 Mt Maunganui

(06) 355 3683 Feilding





What you get

When you buy an Ezyline home you can be assured you are getting a solid home, built using conventional, traditional building techniques. All Ezyline homes are built by qualified tradespeople using the best quality materials from trusted suppliers. We pride ourselves on providing our customers with high-quality, low-cost homes which meet and exceed all requirements of The New Zealand Building Code, as well as the new H1 Insulation requirements meaning you can relax with the peace of mind that your new Ezyline home is warm, well insulated, and built to last. Your Ezyline Home will arrive onsite with a full building consent Code Compliance Certificate (CCC), and a 10 Year Master Builders Guarantee*, built and backed by a business that has been operating for close to 2 decades.

Ezyline Homes is passionate about building real homes for real people.

*Masterbuild Guarantee is an option you can purchase as part of your project.



Contact our team today to start your transportable home journey

0800 EZYLINE (399 546)

info@ezylinehomes.co.nz

ezylinehomes.co.nz